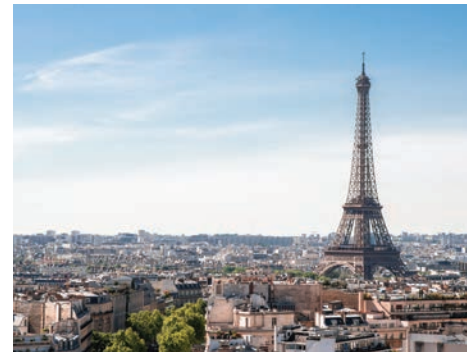




UNIVERSITÉ
CATHOLIQUE
DE LILLE 1875

Learn
In
Lille
Live
Europe **lille**



European Summer Program

Since 2001

Student Guide

22 MAY
20 JUNE

2024

26 JUNE
24 JULY

2024

Contents

Page 4

Université Catholique de Lille

Page 5

LILLE : A City of Art,
Culture, and History

Page 6

European Summer Program

Page 7

ESP Team

Page 8

ESP Interns

Page 9

Regulations

Page 10

Standards of Conduct

Page 12

Practical Information

Page 16

Health & Safety

Page 19

Campus map



Welcome!

Bonjour & bienvenue...

... to France's leading private (not for profit) university, the Université Catholique de Lille, and to LILLE!

Home to the *Université Catholique de Lille* since 1875, Lille is a vibrant and dynamic university city at the centre of Western Europe. With swift connections to Brussels (35 minutes), Paris (60 minutes), and London (80 minutes), Lille is perfect for students planning to visit and study Europe. And there is always much to see and do in Lille itself – a welcoming multicultural haven.

We are proud of our growing network of over 540 partner universities, and are happy to welcome students from all over the world, all year round, as part of our efforts to promote peace, education, cultural awareness, and sustainable development – taking care of one another and of the world we live in.

We applaud you for being a part of these efforts by seizing the opportunity to join us here for an excellent, integrated, and convivial academic program offering a life-changing cultural experience – welcome to LILLE: “Learn In Lille, Live Europe”!



Patrick SCAUFLAIRE
President Rector
Université Catholique de Lille



Audrey VANPEPERSTRAETE
Operational Director
International Relations Office



Université Catholique de Lille



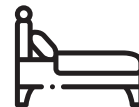
Founded in 1875, and now one of the major higher education institutions in France, the *Université Catholique de Lille* is strongly committed to the development of the region, and to laying the groundwork for the Third Industrial Revolution, through active collaboration both with local authorities and with the business sector. Its teaching departments and research teams combine multidisciplinary expertise and innovative new teaching methods aimed at enhancing the educational experience through cooperative learning and more.



40,000
students



200+
student associations



1,500
student dorm rooms



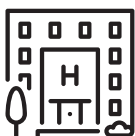
8,000
international students
on campus



700
research and
teaching faculty



15
research chairs



8
health care
institutions



Rated the **2nd**
most beautiful campus
in France



15 minute
walk from campus to
the historic city centre



LILLE

a city of Art, Culture, and History



BIG CITY ADVANTAGES WITH SMALL CITY ATMOSPHERE



Lille enjoys all of the conveniences of being at the centre of a cross-border urban zone with a population of over 2 million, yet remains a “human-sized” university city with under 250,000 inhabitants, nearly half of whom are under age 30! Visitors can get around easily on

foot or by bicycle. Public transport also offers the metro, the tramway, and many bus lines running frequently and late into the night, not to mention convenient train connections to the rest of the region and indeed Europe as a whole.

CITY OF ART & CULTURE



Lille boasts a significant number of theatres, concert venues, cinemas, an opera house, and a national orchestra. Annual cultural events include, among many others, the Lille Piano(s) Festival, International Independent Movie Week, the international “Series Mania” festival, the Wazemmes accordion festival, and the countrywide “Fête de la Musique” on 21 June with free concerts all over town.

And then there are all the world-renowned museums in the region, which include the centrally-located Palais des Beaux-Arts, the Louvre-Lens, La Piscine in Roubaix, and much more. Most museums are free or have reduced rates for students.



MORE DYNAMIC THAN EVER



Feel free to contact the ESP Team to get more detailed recommendations for activities!

lilleprograms@univ-catholille.fr



LILLE European Summer Program



Since 2011, the European Summer Program has welcomed over 3,000 international students. The past 20 years of successful programs have demonstrated the importance and value that the ESP offers to its partners and participants all over the world. The ESP is an international 4-8 week experience that allows students to discover our unique university, city, and country. We're honored to be able to share this opportunity with each of you.



96%

of the students
recommend the program



3,000+

students welcomed
since 2001



130

supporting
universities



ESP Team



Audrey VANPEPERSTRAETE
*Operational Director
International Relations Office*



Garrett EPP
*Academic and Student Advisor
Guide conférencier
Professor*



Matthew KINNEY
*LILLE Programs Coordinator
General Information
Academic Program
Visiting Professors*



Madalena CHAVEIRO-MAGALHAES
*International Relations
Assistant
Housing Liaison*



Justine CHEMIN
*International Relations
Assistant
Housing Liaison
Arrivals & Departures
Academic Visits
Transport and student cards*



Mariia SIMCHUK
*International Relations
Assistant
Student Support
Transcripts
Communication*



Céline DECONINICK
*International Project
Development
International Health Insurance*

ESP Interns



Morgane SADAUNE
France



Lou GARCIA
France



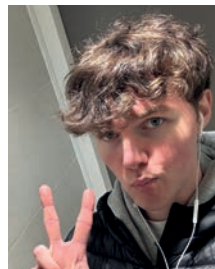
Joséphine DE WAILLY
France



Athena VASQUEZ
United States



Lila SHAAR
France



Emory VALENCOURT
United States



"If you need anything,
join us in the ESP
headquarters (RS 30)!"

Regulations

ACADEMIC



- Attendance in classes is compulsory; **unauthorized absences will be penalized;**
- Students will not be admitted to class if they arrive more than ten minutes after the official start time. **These students will be marked absent with consequences for their final grades;**
- Absence from class will only be tolerated in the case of sickness;
- In case of illness, students should notify the LILLE Programs team by email or written message as soon as possible but certainly within 24 hours of their illness. **Students who fail to do this will have an unauthorized absence recorded by the LILLE Programs team with consequences for the students' final grades;**
- **Students with more than one absence due to illness will be required to visit a doctor** before any further absences will be authorized;
- Eating is **not permitted during class;**
- Devices receiving phone calls or messages are to be kept switched off during class;
- Grading is assessed as follows: **attendance 20%, participation in class 20%, and final exam 60%** unless otherwise specified in your course syllabus;
- Academic dishonesty, plagiarism, or cheating in any form will not be tolerated.

LIABILITY



- You have subscribed for travel and health insurance for the LILLE Programs. The University's insurance policy covers you for civil liability for all activities mentioned in this guide. In addition, you must have a valid subscription - either personal or through your university, or through the LILLE Programs - for adequate travel and health insurance coverage for the LILLE Programs, covering you for medical expenses, travel, and repatriation.
- In regard to activities undertaken personally, you agree to release the LILLE Programs and the *Université Catholique de Lille* from any and all liability, from any loss, damage, injury, or expense that you may suffer or that you may cause to any third party.
- Any personal trip outside Lille must be declared via a travel form available at the LILLE Programs office.

Standards of Conduct



1

Each country has its own laws and regulations and has standards of acceptable conduct in the areas of dress, manners, morals, religion, social customs, politics, alcohol use, drug use and general behavior.

- a. I recognize that behaviour or conduct which violates those laws or standards could harm the reputation of the LILLE Programs, and the relations between the *Université Catholique de Lille* (UCLille) and my home university.
- b. I also understand explicitly that behaviour or conduct which violates those laws or standards could harm my own health and safety as well as the health and safety of other participants in the program.
- c. I take full responsibility for my behaviour and conduct.
- d. This acceptance of responsibility applies to my conduct and behaviour whether or not I am under the direct supervision of the LILLE Programs, their employees or agents or program officials.
- e. I will make reasonable and good faith efforts to become informed of all laws, regulations and standards and further agree that I will abide by and comply with those laws, regulations, and standards.

2

I will comply with all rules, standards, and instructions for student behaviour and further agree to comply with any supplemental rules or standards adopted by the UCLille for the LILLE Programs.

3

I agree that the UCLille has the right to enforce all of the standards of conduct, rules and regulations described and in any other materials provided to me.

4

The violation of any rules, regulations, or orders of either UCLille personnel or any other lawful authority is grounds for immediate expulsion from the program.

5

In the event of a program faculty director from my home university being present for the program, then the enforcement of the rules, regulations, and standards of my home university are the responsibility of the program faculty director and the Study Abroad Office. In that role, the faculty director and the Study Abroad Office, in conjunction with UCLille will use their discretion regarding what interim disciplinary action to take, including removing the participant from the program and sending them home.

6

The use or possession of drugs or any other illegal substance on the program is expressly prohibited and is cause for immediate expulsion from the program and may be subject to prosecution in France. I understand that the penalties for use or possession of illegal substances in other countries can be much more severe than in my own country and that the UCLille and its agents may not be able to assist me if I am in violation of French laws or standards.

7

The abuse of alcoholic beverages is not permitted nor is the consumption of alcohol permitted in accommodation designated by the program.

8

I must reside in the housing location designated by the program and abide by their regulations.

9

I will leave my room clean as I found it. Charges may apply.

10

I agree to inform the UCLille LILLE Programs and the Study Abroad Office at my home university in writing should I choose to withdraw from the program. I am responsible for all damages caused by my actions or conduct.

11

If I am expelled from the program, I consent to being sent home at my own expense with no refund of fees or expenses. Expulsion from the program may also include failure of courses. I further understand that I may be subject to further disciplinary, civil and/or criminal action upon my return to my home university.



Practical information



INTERNET

In the buildings of the University:

Connect to the “ICL — Invité” wireless network. Log in on the “authentication” page with login and password that you will receive by e-mail every week. Leave the “authentication” page open and surf on the internet from other tabs.

POST OFFICE

La Poste Lille République

8 Pl. de la République
Monday to Friday: 9am to 6pm
Closed between 12pm and
2.30pm on Tuesday
Saturday: 9am to 12.30pm

La Poste Euralille

Shopping Centre Euralille
Passage des 2 Gares
Monday, Tuesday,
Thursday, Friday: 10am to 7pm
Saturday: 10am to 5pm

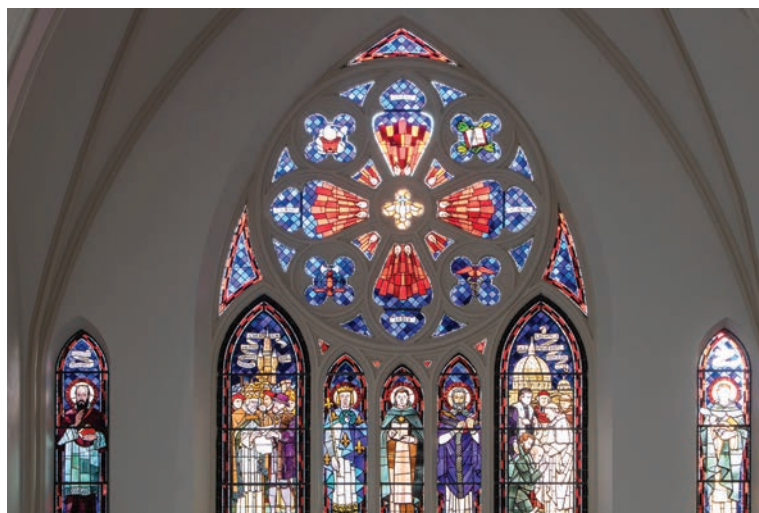


MAIL

If you expect to receive some postal mail during your stay, please use the following address. Letters will be distributed from the ESP office on weekday mornings.

European Summer Program

Université Catholique de Lille
60 boulevard Vauban
CS 40109
59016 Lille Cedex France



SPIRITUALITY

Cathédrale Notre Dame de la Treille

Place Gilleson

Eglise Saint Maurice

19 bis Parvis St Maurice

Eglise Saint Pierre Saint Paul

23 rue du Marché

Chapelle Saint Joseph

(in the main building of the university)

60 boulevard Vauban

Anglican Church

14 rue Lyderic

French Reformed Church

Place du temple

Mosque Al Imane

59 rue de Marquillies

Synagogue (Israelite Community Centre)

5 rue Auguste Angellier

Buddhist temple Pagode Chùa Hộ Quốc

113 rue Daubenton
Roubaix

MONEY EXCHANGE

Western Union

216 rue Léon Gambetta
Monday to Saturday:
9am to 7pm
Closed on Sunday





MEALS

You will find many snack bars on the boulevard Vauban to buy sandwiches, pasta, pizza, etc.

You can also use the **RU (University Restaurant)**
 127 rue Meurein
 Monday to Friday:
 11am to 1.30pm

GROCERY STORES

Carrefour Euralille

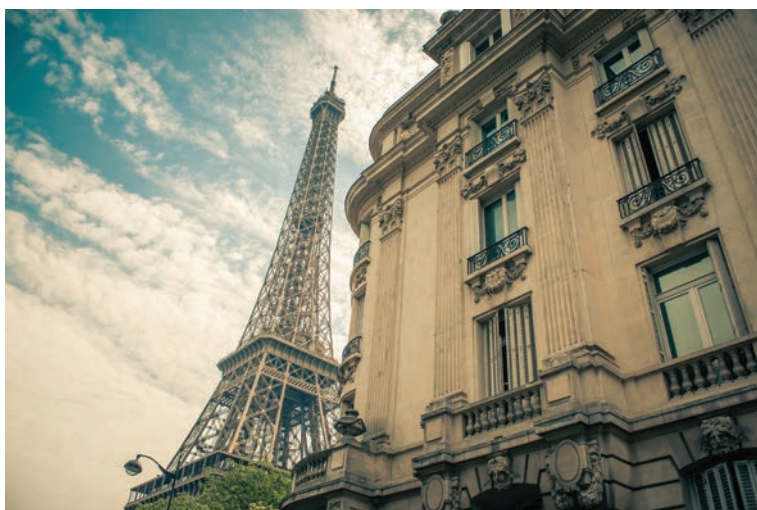
1 Centre commercial Euralille
 Monday to Saturday:
 9am to 10pm
 Sunday: 9am to 12.30pm

Carrefour Market Gambetta

281 rue Léon Gambetta
 Monday to Saturday:
 8:30am to 9pm
 Sunday: 9am to 7pm

Carrefour Market Lille Moselle

41 boulevard de la Moselle
 Monday to Saturday:
 9.00am to 8.30pm
 Sunday: 9.00am to 12.30pm



TRAVEL ON WEEKENDS

You are welcome to travel on weekends when not taking part in an ESP activity.

If you are travelling, please **complete a travel form by scanning the QR code below** by the previous Friday morning at the latest with the details of your trip.





DOCTOR

CPSU

Located at 47 bis rue du Port, the University Multi-Service Health Centre (CPSU) offers general medical consultations, gynecology consultations, nurse appointments and psychological support.
Monday to Thursday: 8am to 7pm / Friday: 9am to 6pm / closed in July

SOS médecins

3 avenue Louise Michel
Tel: +33 (0)3 20 29 91 91
24 hours a day / 7 days a week

PHARMACY

Grande Pharmacie des Halles

99 rue Massena
24 hours a day, 7 days a week

Grande Pharmacie Colbert

269 rue Nationale
Monday to Friday:
8.30am to 7.30pm
Saturday:
9am to 12.30pm / 2pm to 7pm

Grande Pharmacie de France

12 rue Faidherbe
Monday to Saturday:
9am to 8pm

The complete list of English-speaking practitioners in Lille is available at the office and on our website.

Emergency # in Europe:

112



Health & Safety

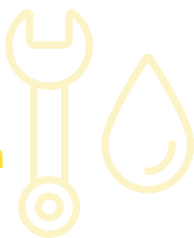


I'm locked out of my room?

You should sleep at a friend's place or at the hotel and wait for the next morning (or Monday, if on a week-end) to ask the residence staff to open your room.

- Make sure you keep your room key on you at all times; don't leave it inside when you go out nor give it to anyone else.

There is a technical problem in my room?



First step: report it to the dorm management.

Second step: if no news after 24h, come and tell an ESP Team member so that they can liaise with the dorm.

My belongings are lost, missing, or stolen



Contact the ESP team as soon as possible. We can accompany you to the police station to file a report if necessary. Make sure you have invoices at home for your most expensive belongings (suitcase, laptop, phone, and soon) to provide for insurance purposes.

- Make a copy of your passport and keep it with you at all times.
- Leave your passport in a secure place in your room. You can also leave it at the ESP office if you prefer. You should only have your passport with you when going abroad on ESP organized trips or on your personal trips (outside Lille/ France).
- It is best to carry a minimum of cash with you (50€ max).
- Carry a small bag or a concealed pouch rather than a backpack, and don't keep your wallet in your back pocket.
- Keep your valuables with you at all times. Do not leave your personal belongings unattended, or leave your mobile phone or wallet on the table of a café or restaurant.

Note that ESP dorms are secured with video recording (in most) and/or by the presence of dorm management 24/7 (in others). However, thefts can occur in unoccupied rooms in big cities. Therefore, you should keep these things in mind:

- Shutting the door does not mean it is locked. Double-locking is the solution.
- Do not change rooms without letting the ESP team know.
- Double-lock your bedroom door (turn the lock twice) any time you are not in it, even for a short period of time like popping by a friend's room or the bathroom, or going to look for something/someone. This makes the door completely secured.



I'm sick or injured?

In case of illness or minor injuries, you should report the problem to the ESP office during office hours for follow-up regarding attendance records.

If you want to see a doctor or go to the pharmacy, the ESP staff can go with you; just ask someone on the ESP team.

The University's health center is open on weekdays until end of June. A list of English-speaking doctors is available at the ESP office along with a procedure to follow.

In case of serious injuries:

First step : call 112 (the pan-European emergency number for all services, with English-speaking staff available).

Second step: contact the ESP emergency phone number. Keep your insurance details with you at all times. Keep any invoices to give to your insurance provider.

There is fire? In case of fire, the procedure in France is generally the following:



- Leave all belongings in the room and find the closest exit of the building.
- Do not take elevators, only stairs.
- Follow the instructions given by security officers (they usually have a «macaron» on their arm).
- Please note that there is an incident alarm test every first Wednesday of the month around noon. The fire alarm of the city will go. There is no need to evacuate for this test. In an actual emergency, you may be sanctioned if you do not follow proper evacuation procedures. Once you are out, look for the nearest security/police officer for further instructions.

Call the ESP emergency phone for extra support.

Other incidents?

In case of any other major incident, please contact the ESP emergency phone.

If you are not on campus, please make sure to report your location and safety within the next 2 hours or as soon as possible to the ESP office (emergency phone, WhatsApp, WeChat, Facebook, etc).

Please make sure to provide a working phone number to the ESP office in the first days of the program in order that you can be contacted if anything should happen.



**EMERGENCY NUMBER:
+33 (0)6 51 57 89 42**



COVID-19 INFORMATION

The *Université Catholique de Lille* follows all official French government regulations and recommendations concerning COVID-19. If you have any questions regarding this protocol, please contact us at **lilleprograms@univ-catholille.fr**

For official French government information, please visit: **www.gouvernement.fr/info-coronavirus**

As of the printing of this student guide, there are no official restrictions regarding the wearing of facemasks or the number of people allowed in classrooms on our campus. We encourage all students, faculty, staff, and visitors to practice good social distancing, to wash or disinfect their hands regularly, wear a mask if desired, and to get tested ASAP at any sign of Covid-19 symptoms.

What to do if you are experiencing COVID-19 symptoms

If you are experiencing COVID-19 symptoms, you should be tested ASAP in a local pharmacy. The rapid antigen tests cost around 25€ and the results are ready in under 30 minutes.

What to do if you test positive for COVID-19

If you test positive for COVID-19, you need to self-isolate in your dorm room and contact the emergency ESP telephone number immediately at **+33 (0)6 51 57 89 42**. A member of the ESP Team will guide you through the process that ultimately requires you to self-isolate as much as possible and avoid contact with others. If you are vaccinated, you must self-isolate for 5 days and retest on the fifth day. If you are unvaccinated, you must self-isolate for 10 days and can begin retesting to exit the self-isolation after 5 days. If possible, your courses will move to a hybrid scenario, if not possible then we will arrange with your professor so that you can complete the work on your own.

Remember to stay safe and to do your part in protecting yourself and those around you.

**EMERGENCY NUMBER:
+33 (0)6 51 57 89 42**



Campus map





UNIVERSITÉ
CATHOLIQUE
DE LILLE 1875

CONTACT

ESP Headquarters: Room RS 301
(Robert Schuman building)
Opening hours: Monday to Friday – 8.30am to 5.00pm
Email: lilleprograms@univ-catholille.fr
Tel. : +33 (0)3 59 30 25 39

International Office: Room HA024
(Main Academic building, 60 boulevard Vauban)

ESP EMERGENCY NUMBER:
+33 (0)6 51 57 89 42



ESPΩL

esl
esl



JUNIA HEI

JUNIA ISA

